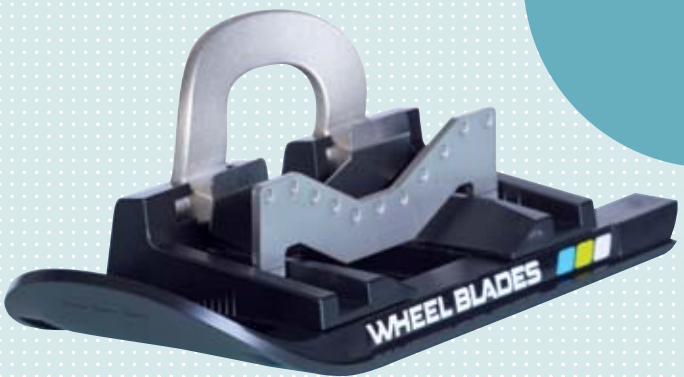


**ottobock.**

# Mobile in Winter with Wheelblades

Runners for all wheelchairs  
and buggies worldwide

Quality for life



Information for users

# Wheelblades

## More freedom

Snow and ice have slowed down many. But for wheelchair users, they have often constituted an insurmountable obstacle. The small front wheels sink in easily, the wheelchair slides and is hard to steer. Of course the same applies to strollers and rehab buggies. Many wheelchair users have been confined to their homes when winter reveals itself in all its glory.

With the Wheelblades by inventor Patrick Mayer, you are mobile in the winter wonderland. These high-quality skis prevent sinking in and permit easier steering. All common wheelchairs and buggies on the market worldwide can be mounted on the runners with a single click.

**Now wheelchair users are virtually unstoppable even in winter.**

---

### Advantages at a Glance

- More freedom, more activity
  - For all common wheelchair models worldwide
  - Installed in seconds
  - Easy control, good steering
  - Lightweight, handy, portable
  - Trouble-free even when pushing
-

# Ready for winter with a click

Wheelblades are small, high-quality skis for wheelchairs and buggies. But rather than shoes, the small front wheels of the wheelchair or buggy are mounted on the runners. Bindings for various sizes are available, just like with skis. Wheelblades fit all common wheelchairs, strollers and rehab buggies worldwide (wheel width from 1.8 to 6). The wheels attach with a click.



- ▶ Place Wheelblades in front of the wheelchair, ...



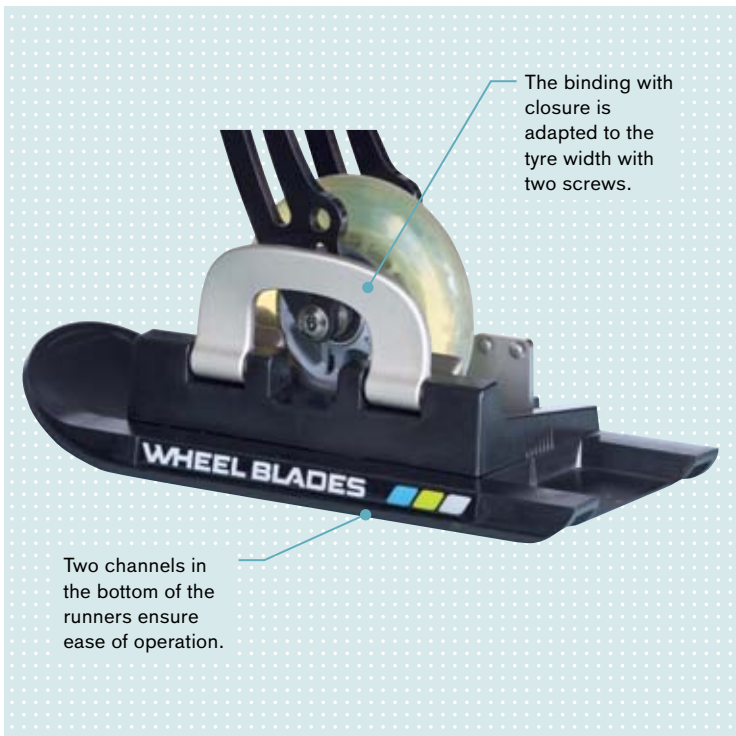
- ▶ drive up and ...



- ▶ position front wheels in the bindings, ...



- ▶ engage the closure and drive away!



Thanks to optimum pressure distribution on snow by the runners, the wheels cannot sink in. Since the friction is very low, the runners are also able to compensate for larger surface irregularities.

Two channels on the underside compress the snow, pressing it under the runner like a rail. The wheelchair glides through the snow with corresponding ease. The binding is integrated at the front of the ski for easy steering.

Steering also works similar to a ski: since the binding is integrated at the front of the ski, the Wheelblades are very easy to control.

Age and fitness do not play a major role because the Wheelblades are very small and handy. Wheelblades offer more freedom and a new attitude towards life for young and also older active athletes as well as recreational users.

The morning is gleaming white. New snow has fallen. All sound is muffled. As though the world were holding its breath. How nice it would be to make new tracks in the fresh snow, to make this winter wonderland your own, breathe the fresh, cool air, toss a snowball at a window ...



With Wheelblades, even wheelchair users can leave their mark.

**A world novelty for mobility. And fun.**

Otto Bock HealthCare GmbH  
Max-Näder-Straße 15 · 37115 Duderstadt/Germany  
T +49 5527 848-1590 · F +49 5527 848-1676  
reha-export@ottobock.de · www.ottobock.com